



WORLD TOUR
2019

Level 4

Sharing Your Data





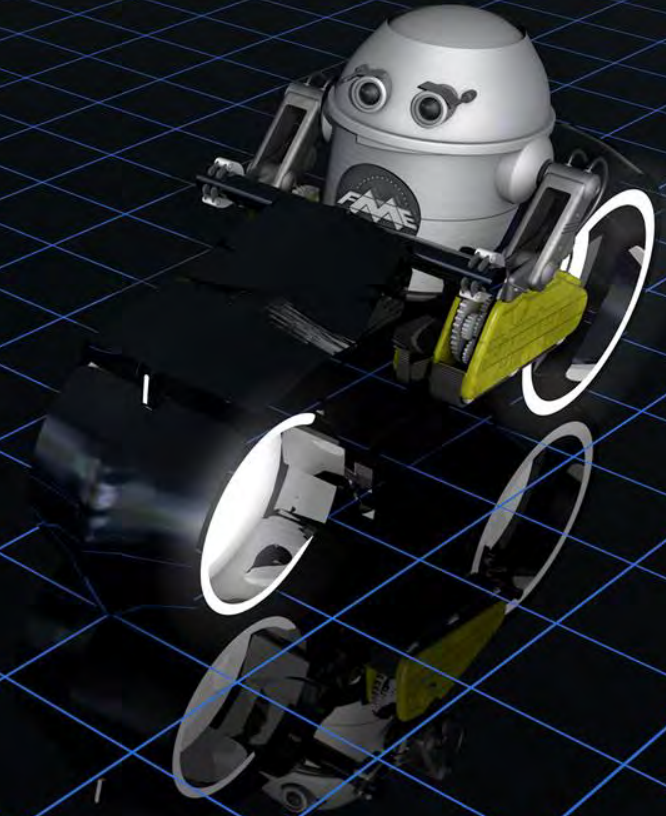
AGENDA

- 1 Key challenges
- 2 Sharing from a complex format
- 3 Sharing complex data

START

Key Challenge

Sharing complex data with anyone, including non-technical end users.



Two Main Issues

1. Data is in a format or system that users can't easily **access**.
2. Data is too **complex** and hard to understand.

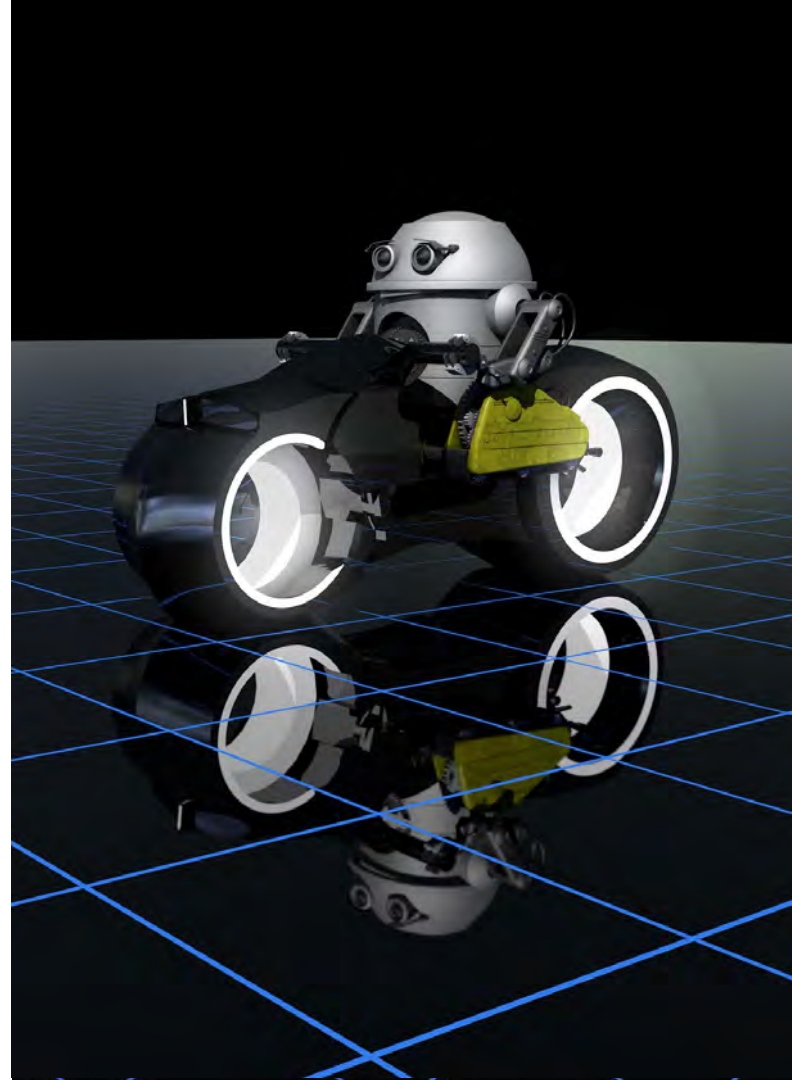
Problem: Sharing data that's not easy to access

- Not everyone has the tools to access data at the source.
- Expert knowledge required to navigate some systems.



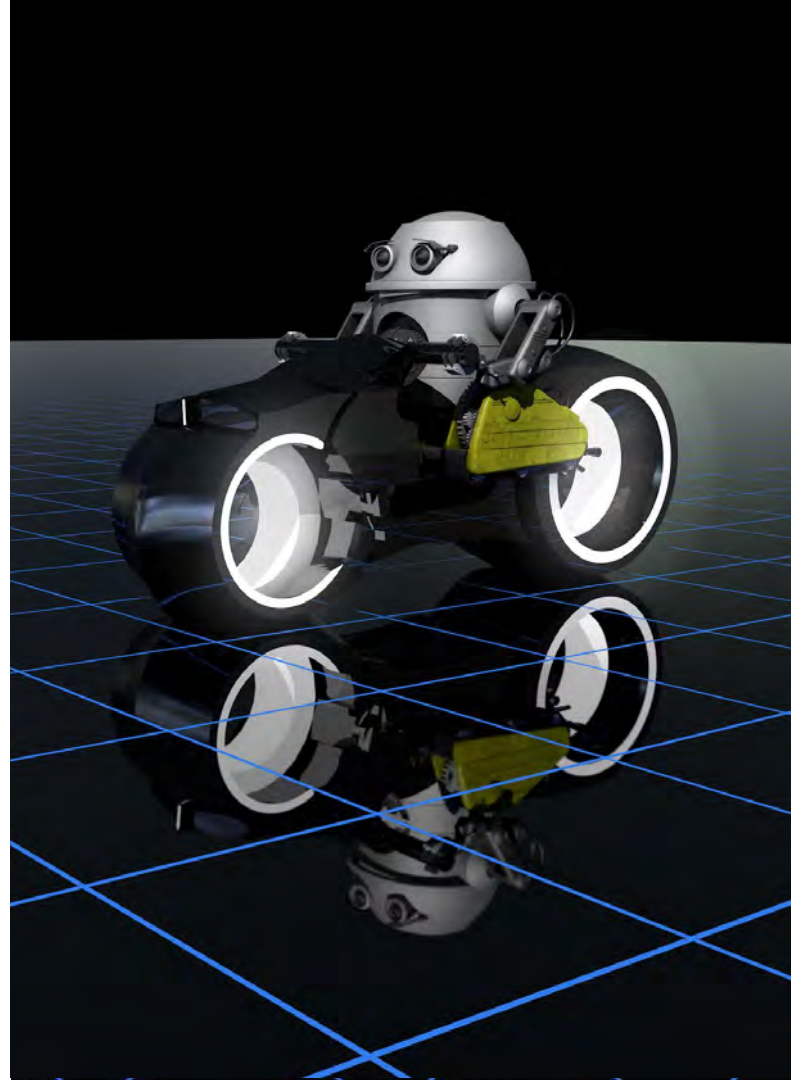
Solution: Friendly Formats

- PDF
- Microsoft Word, Excel, PowerPoint
- Web browser visualizations, e.g. Cesium
- HTML page (including web maps)
- Augmented reality on mobile device
- Make a game!



Steps

- **Integrate** data from various systems
 - CAD, GIS, Tabular, 3D ...
 - Take advantage of the strengths of these ways to store data.
- **Convert** data to a friendly format
 - Let the user work with the data they need with the tools they have.





MapnikRasterizer



PowerPoint File Edit View Insert Format Arrange Tools Slide Show Window Help

File Edit View Insert Format Arrange Tools Slide Show Window Help

Home Insert Layout References Send To Review

Text Box

Outline

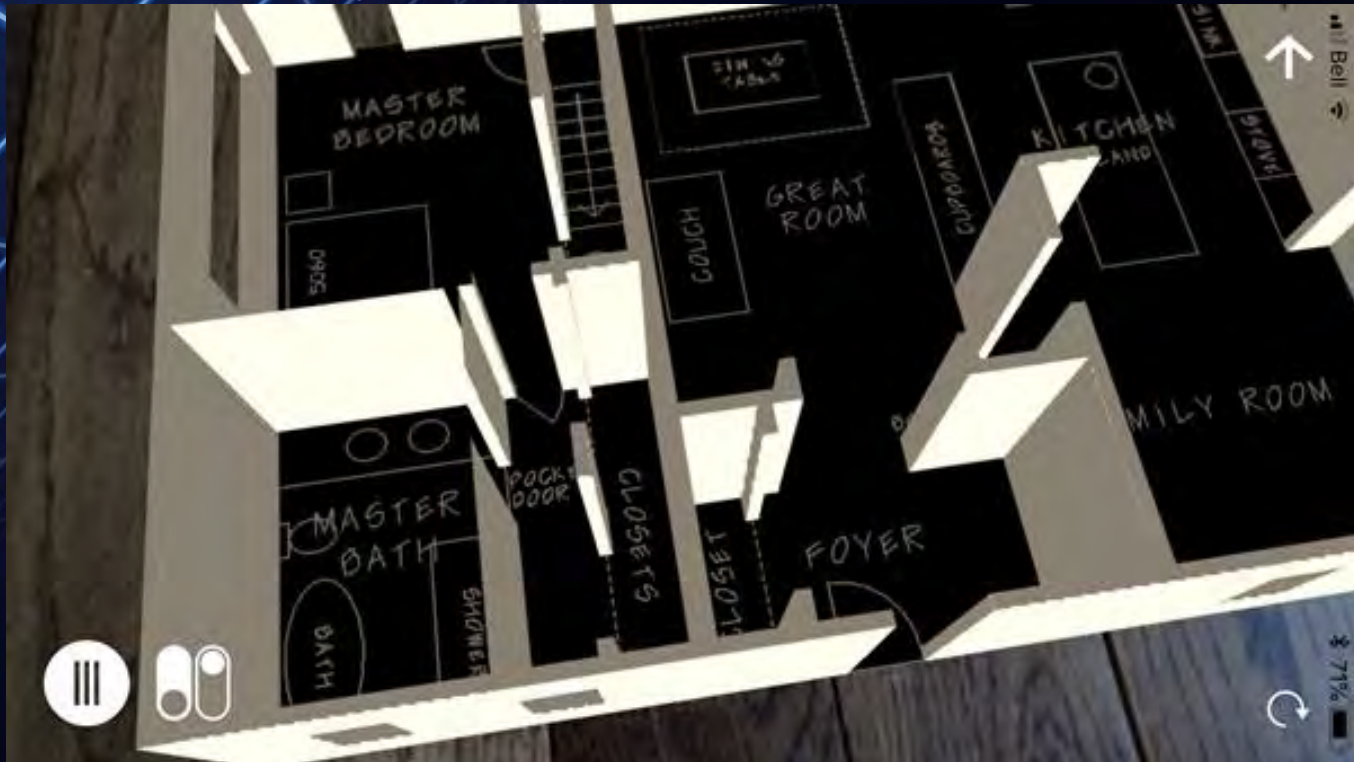
Canada

Canada

Click to add notes

Slide 1 of 1 210%

Detailed description: This is a screenshot of a Microsoft PowerPoint presentation. The main slide features a map of Canada with the word "Canada" written in a large, black, sans-serif font at the top left. The map is color-coded by province and territory: Yukon (purple), Northwest Territories (red), British Columbia (blue), Alberta (teal), Saskatchewan (purple), Manitoba (teal), Ontario (orange), Quebec (blue), New Brunswick (red), Nova Scotia (orange), and Prince Edward Island (green). A small thumbnail of the map is visible in the top-left corner of the slide area. The PowerPoint interface includes a menu bar at the top, a ribbon with various tool tabs, and a status bar at the bottom indicating "Slide 1 of 1" and a zoom level of "210%".





Final step: Automation

Make sure the data you're sharing is always up to date.

Run your conversion workflows on a schedule or whenever new data arrives.

Tips for Sharing Complex Data

- Create **interactive** reports to engage users more than a traditional report would.
- Incorporate a **variety** of data sources to enrich the data.
- Build a **self-serve web portal** so users can get the data they want on demand.



Example: Generating Interactive Reports

Letting end users generate interactive reports on demand (via FME Server).

Repository: Sienna

Workspace: TranslinkReport.fmw

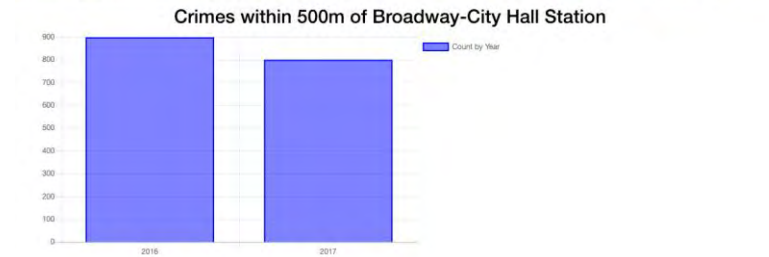
Service: Data Streaming

Published Parameters

Choose a Station

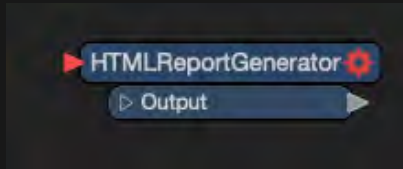
- 29th Avenue Station
- Broadway-City Hall Station**
- Burrard Station
- Commercial-Broadway Station
- Granville Station
- Joyce-Collingwood Station
- King Edward Station

Advanced



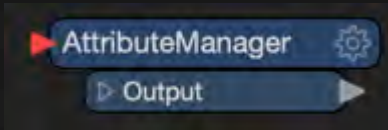
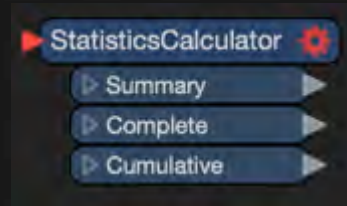
There is a 11% decrease in crimes around Broadway-City Hall Station between 2016 and 2017

Key Transformers



Creates web reports, with maps and graphs. No coding required!

Calculates the statistics so you don't have to.



Sets conditional values for attributes based on the statistics gathered



Demo



FME Data Download Service Completed Successfully

Please click the following link to download the result of your transformation

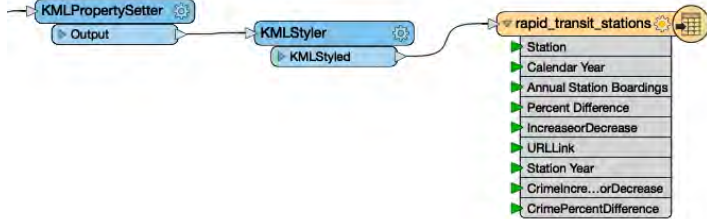
https://fmewt2019-safe-software.fmecloud.com:443/fmedatadownload/results/FME_51292C70_1548896981683_6313.zip



Want the raw data? [Click Here](#) to download it.

Example: Creating a Custom Application

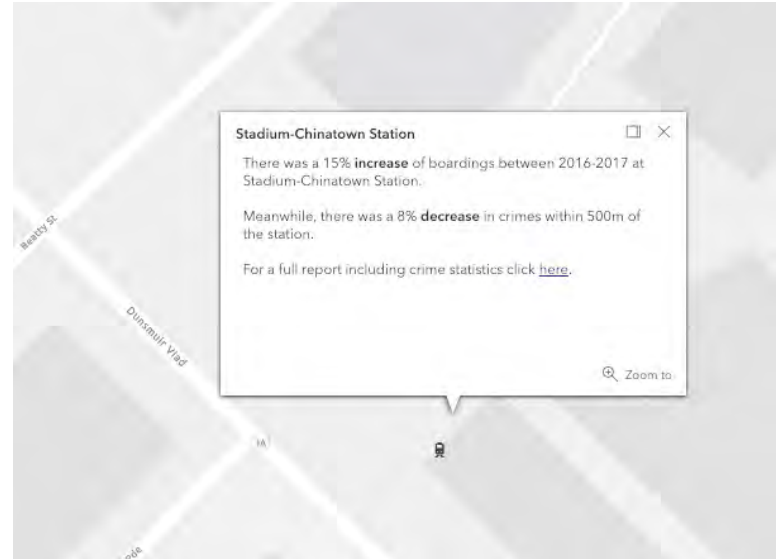
Building a custom web interface to display data (via FME Server).



There was a @Value(Percent Difference)% @Value(IncreaseorDecrease) of boardings between 2016-2017 at @Value(Station).

Meanwhile, there was a @abs(@Value(CrimePercentDifference))% @Value(CrimeIncreaseorDecrease) in crimes within 500m of the station.

For a full report including crime statistics click here.



Key Transformers

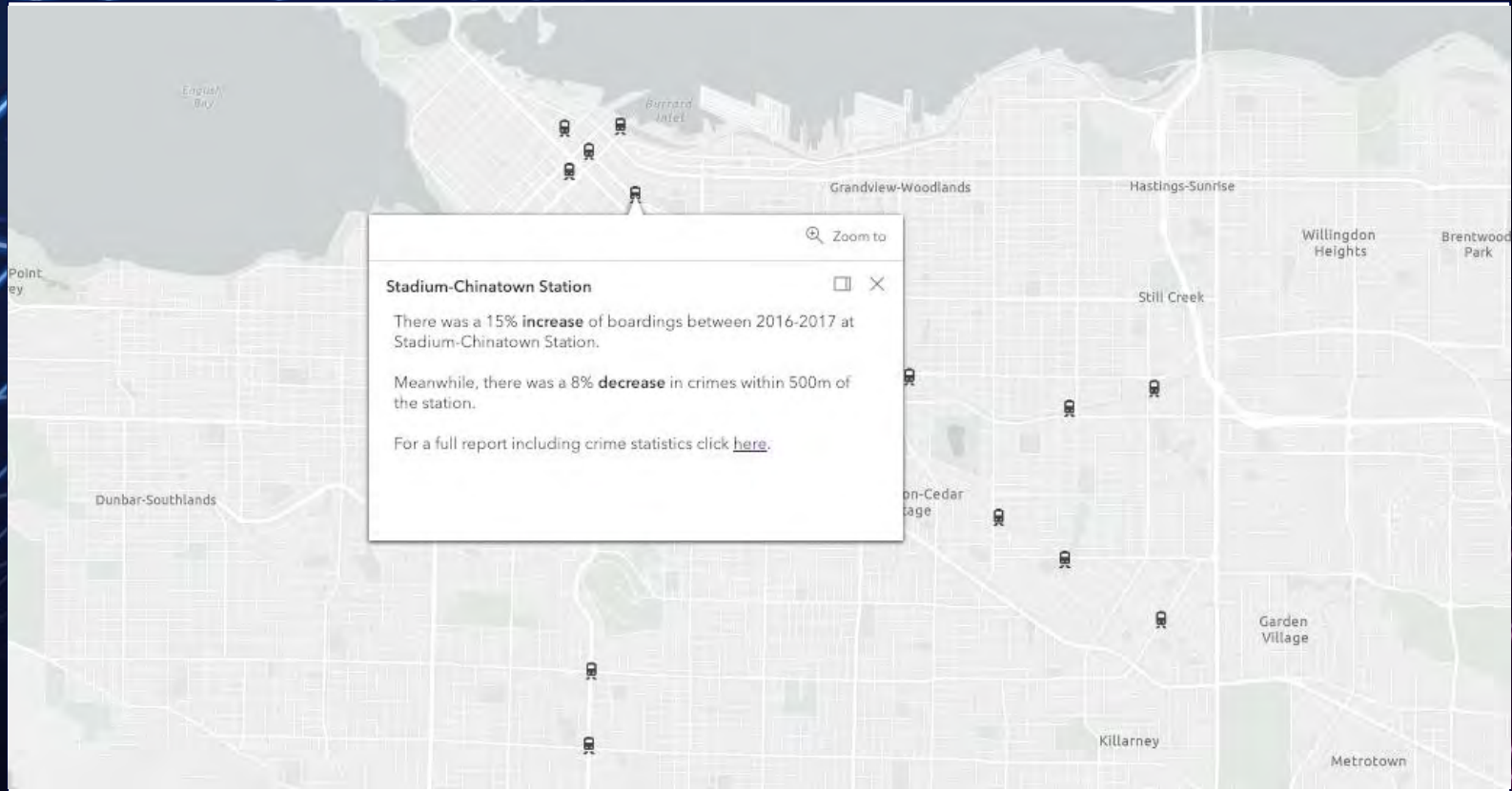


Sets the information in the description balloon. Can include attributes from each location.

Used to join multiple datasets together



Live online! <http://demos.fmeserver.com/translinkreport/>



html

TranslinkReport (5)

On My iPhone

+Tag



AirDrop. Share instantly with people nearby. If they turn on AirDrop from Control Center on iOS or from Finder on the Mac, you'll see their names here. Just tap to share.



Message



Mail



Chrome



Message



Copy



Save to Files



Quick Look



More

Cancel

Learn More

- [Creating PDF Cartographic Output](#)
- [Visualizing Data in a Web Browser with Cesium Ion and FME](#)
- [Introduction to the MapnikRasterizer](#)
- [FME 2016.1 Use Case: HTML Reports for Data Validation](#)
- [Web Data and Reporting](#)





Questions?