



FME
WORLD TOUR
2019

Level 2: FME 2019 Scenarios

FME Server

To advance we
must solve 5
challenges





PRESENTATION AGENDA

- 1 Challenge 1: FME Server Sharing
- 2 Challenge 2: Data Watching
- 3 Challenge 3: Nightly Updates
- 4 Challenge 4: Workspace Orchestration
- 5 Challenge 5: New User Notification
- 6 Bonus Challenge: Easy User Creation
- 7 FME Server 2019.0 New Features

START

DESKTOP 2019



FASTER - EASIER - DARKER



SERVER 2019



FASTER - EASIER - DARKER

Connect. Transform. **Automate.**

Challenge 1

*“We want to **share** FME workflows with people who don’t have an FME Server account.”*



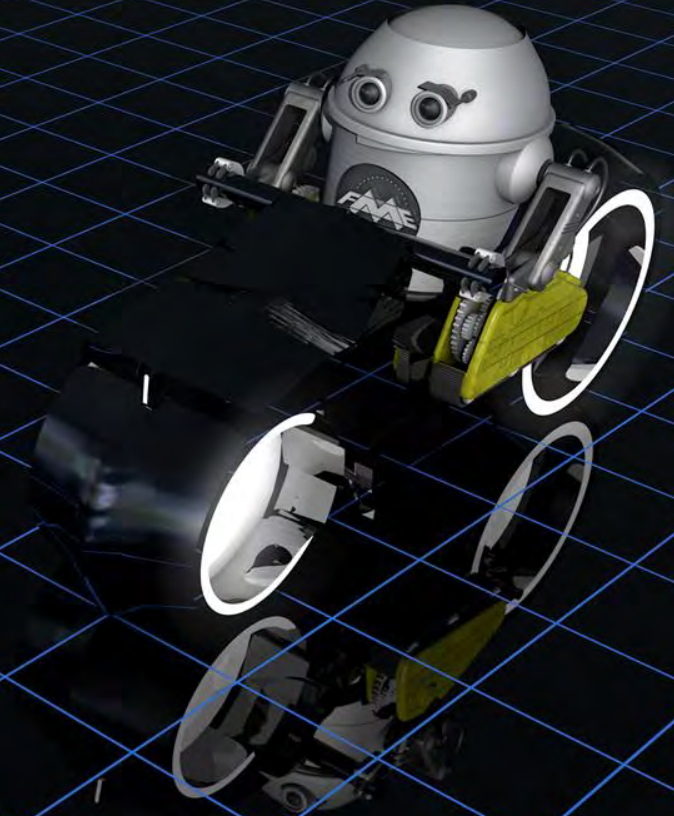


NEW

FME Server Apps

Challenge 1 - Demo

FME Server Apps



Challenge 2

“We want to **watch for data** and **run an FME task** whenever new data arrives.”





NEW

Automations

A simple concept consisting of **Triggers** and **Actions**

Triggers

Start an automation



Directory
Watch



Schedule



Email
(IMAP)



System
Event

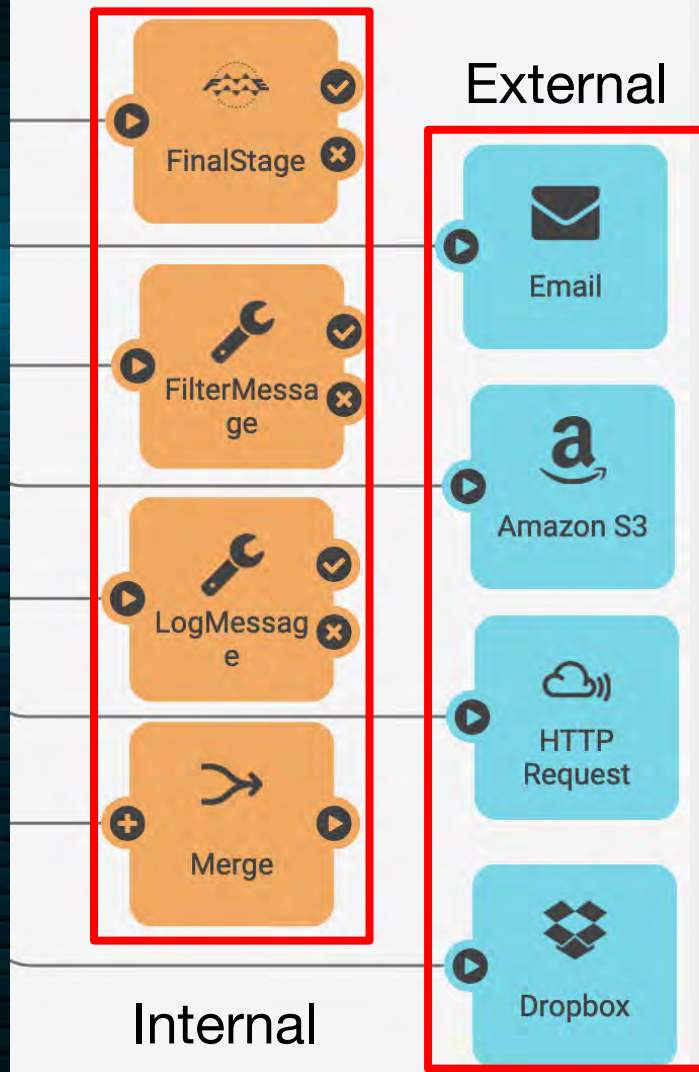


FME Server
topic...



Actions

Respond to triggers



Every Automation
has the same pattern:





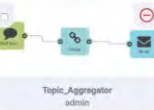











When
Trigger Occurs
then
Perform Action



Automations

Filters

Select All New Manage Tags Actions

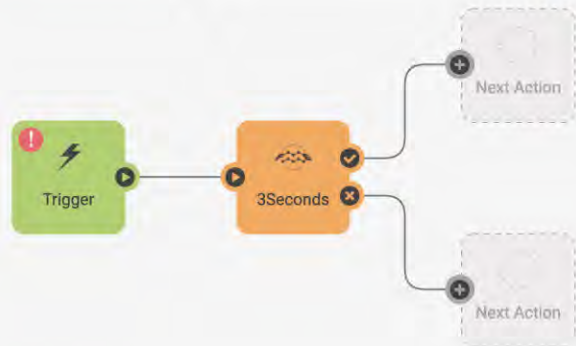
 SchemaTest_2 admin	 StressTestSchema admin	 ANDTool_Aggregator admin	 StressTest2_Aggregator admin
 Topic_Aggregator admin	 StressTest1_Aggregator admin	 JMS Source Test admin	 SQS Source Test admin
 Email Destination Test admin	 SNS Source Test admin	 DirectoryWatchFilter admin	 FilterEmail admin
 IMAP_WS_Email admin	 Sched_WS_WS_Dropbox admin	 DirWatch_S3_FTP admin	 SchemaTest admin

Automations

Menu

Unsaved Workflow

Start Automation



```
graph LR; Trigger[Trigger] --> Delay[3Seconds]; Delay --> NextAction1[Next Action]; Delay --> NextAction2[Next Action];
```

+

Watching for Data

Trigger when data arrives.



Amazon S3
Watch

Amazon S3 Watch

Triggers when data arrives in location in S3 Bucket



Directory
Watch

Directory Watch

Triggers when data arrives in File Directory.



FTP Watch

FTP Watch


Triggers when data arrives at location on ftp site



Dropbox
Watch

Dropbox Watch

Triggers when data arrives in Dropbox Directory.



AZ
Azure
Event Grid

Azure Event Grid

Can Trigger when data arrives in Azure Storage

Data Arrival Workflow

When

Trigger Occurs

then

Perform Action



Demo: Directory Watch Automation

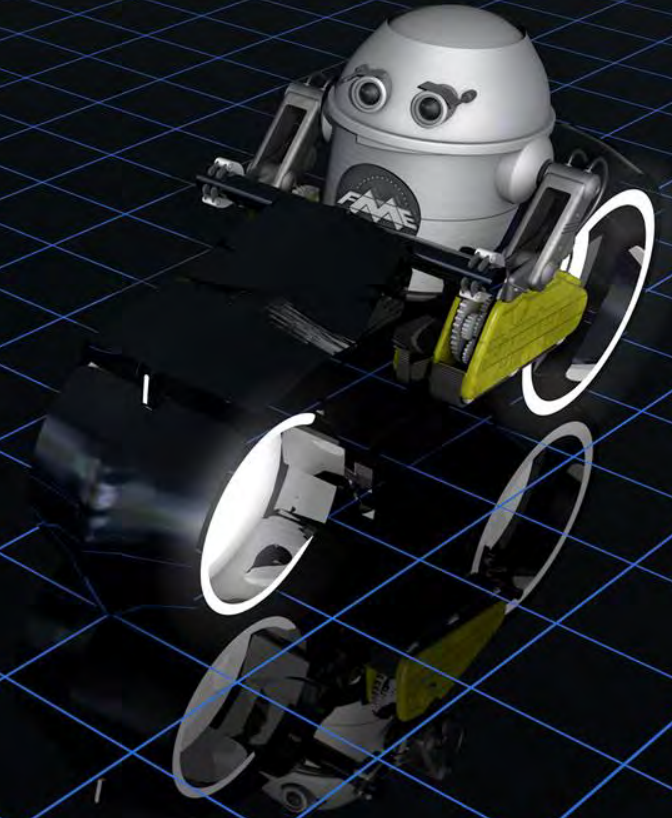
Challenge 3

“We want to automatically **update** a database overnight.”



Scheduling

The most popular automation



Scheduled Automation

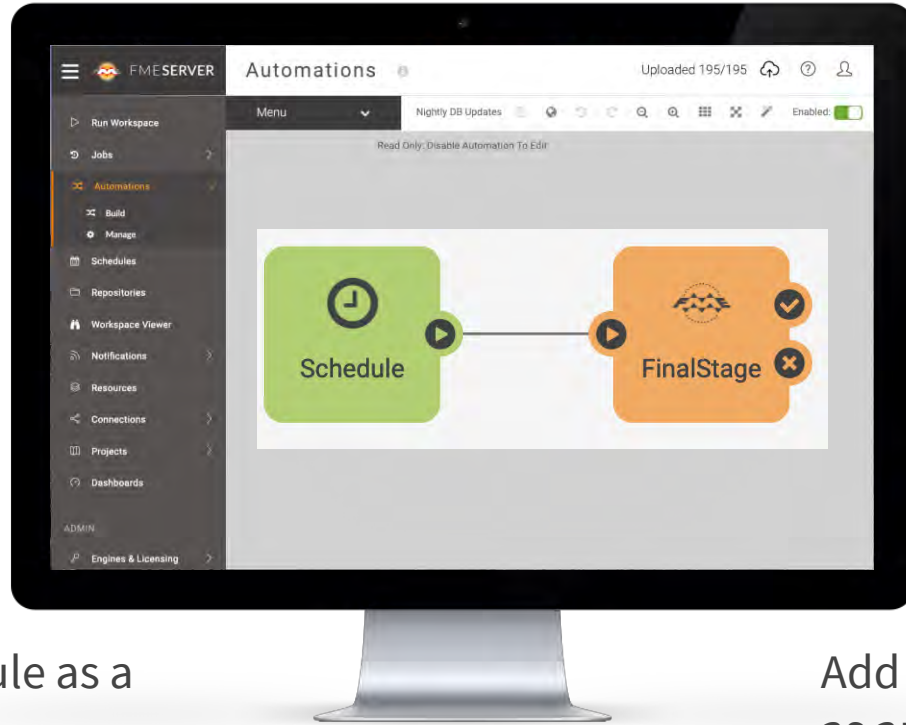
When

Trigger Occurs

then

Perform Action

Schedule the workspace with Automations



Add a Schedule as a
Trigger

Add a Workspace
as an *Action*

Save and start your Automation



Demo: Update Database on Schedule

Challenge 4

*“We want to orchestrate complex workflows consisting of **many** FME workspaces.”*



Workflow Orchestration

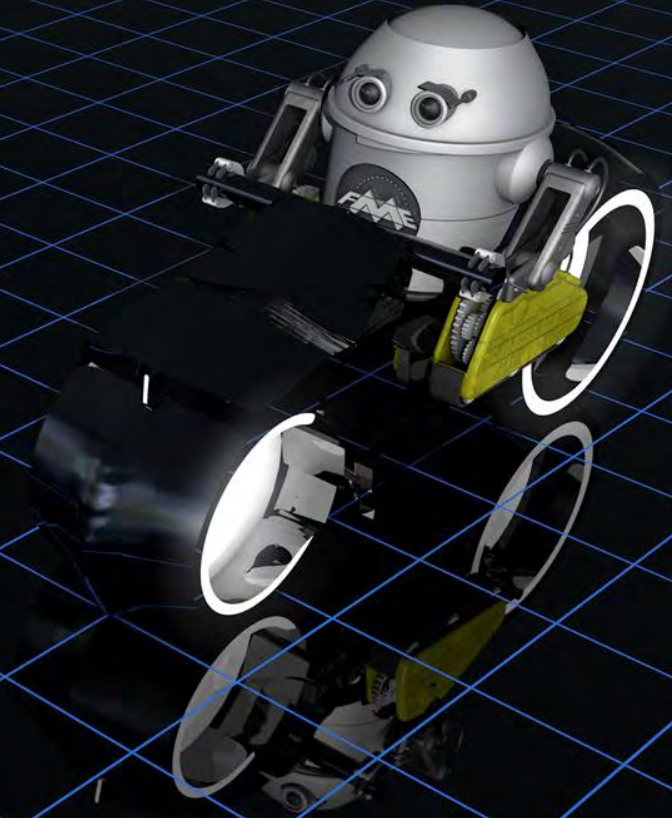
When

Trigger Occurs

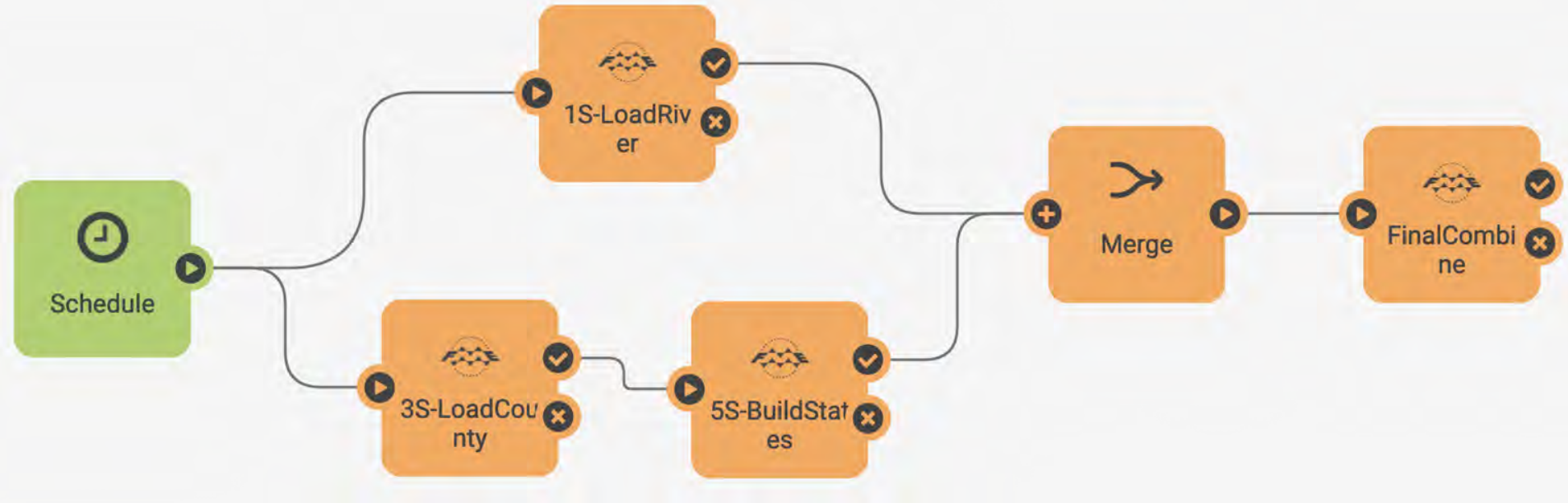
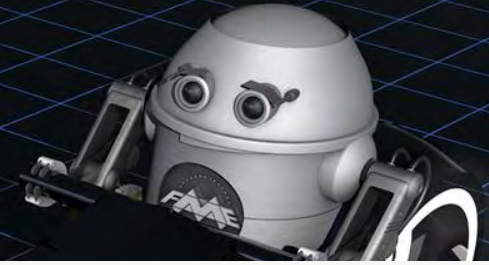
then

Perform Action

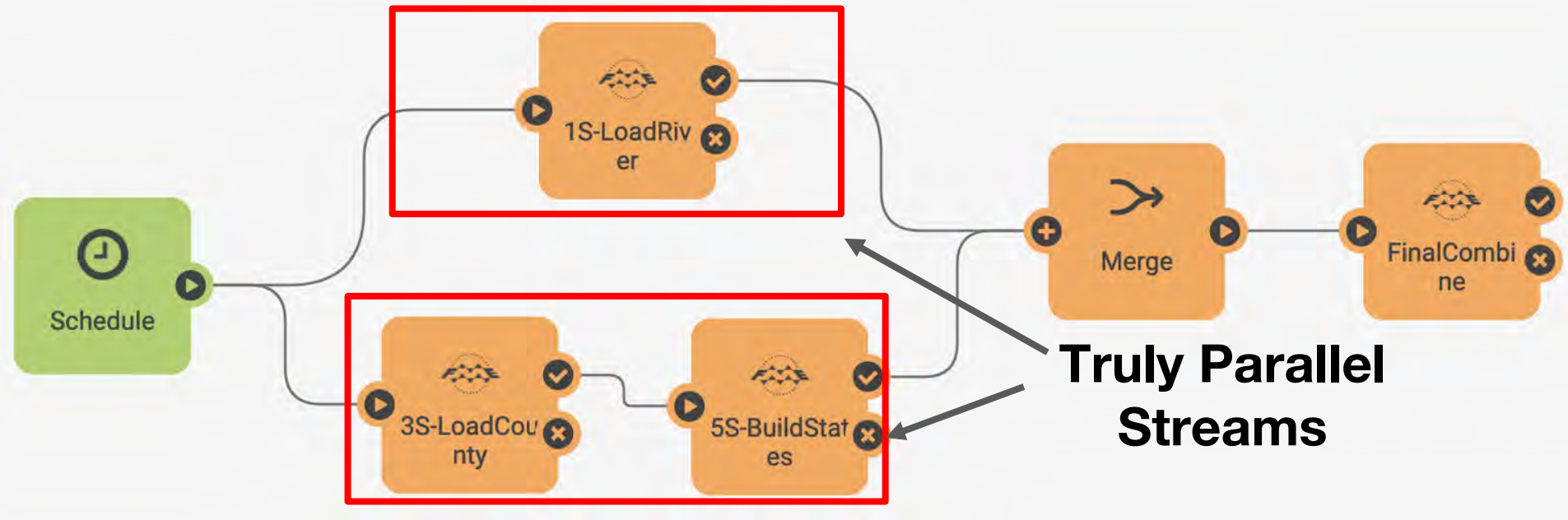
Automations: Workflow Orchestration



Automations: Workflow Orchestration



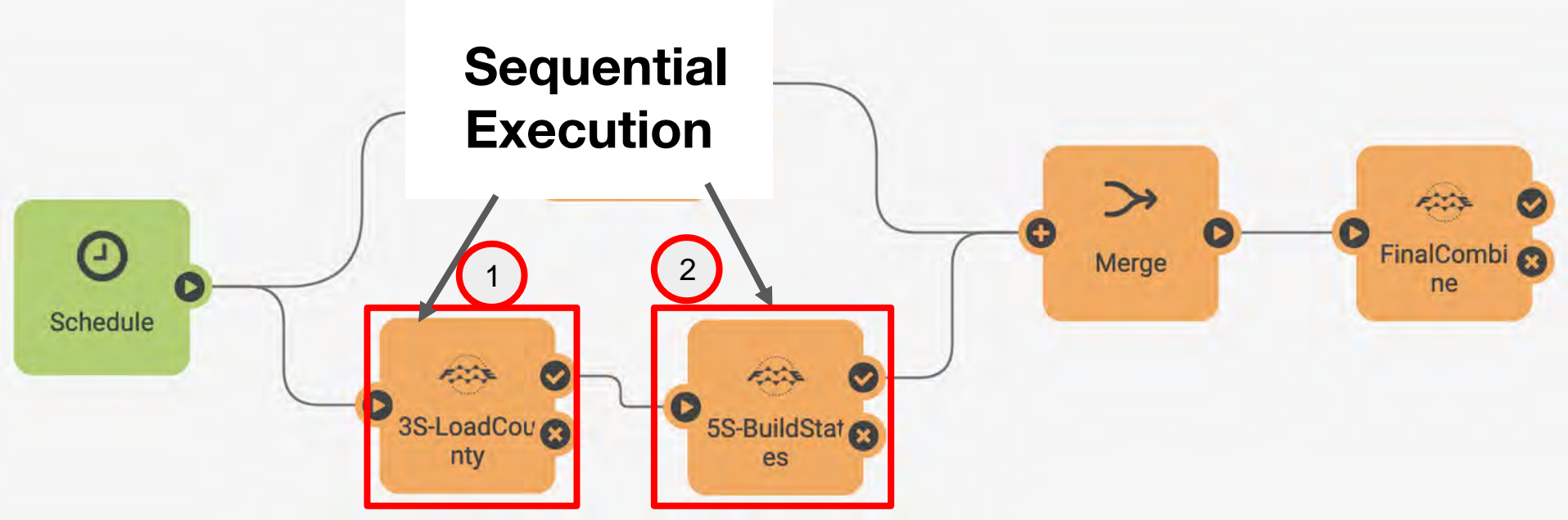
Automations: Workflow Orchestration



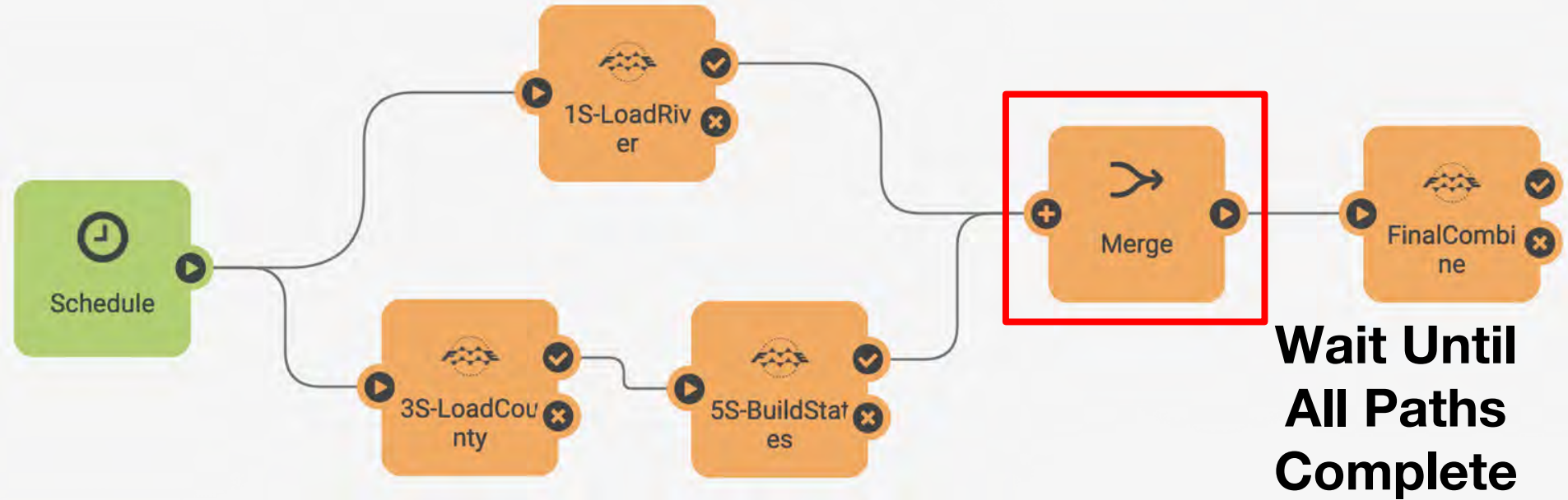
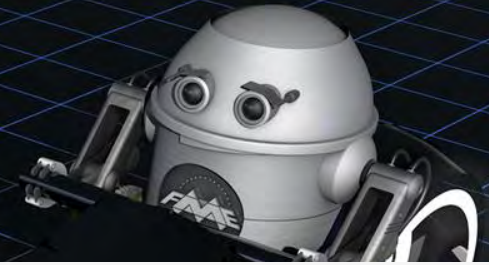
Automations: Workflow Orchestration



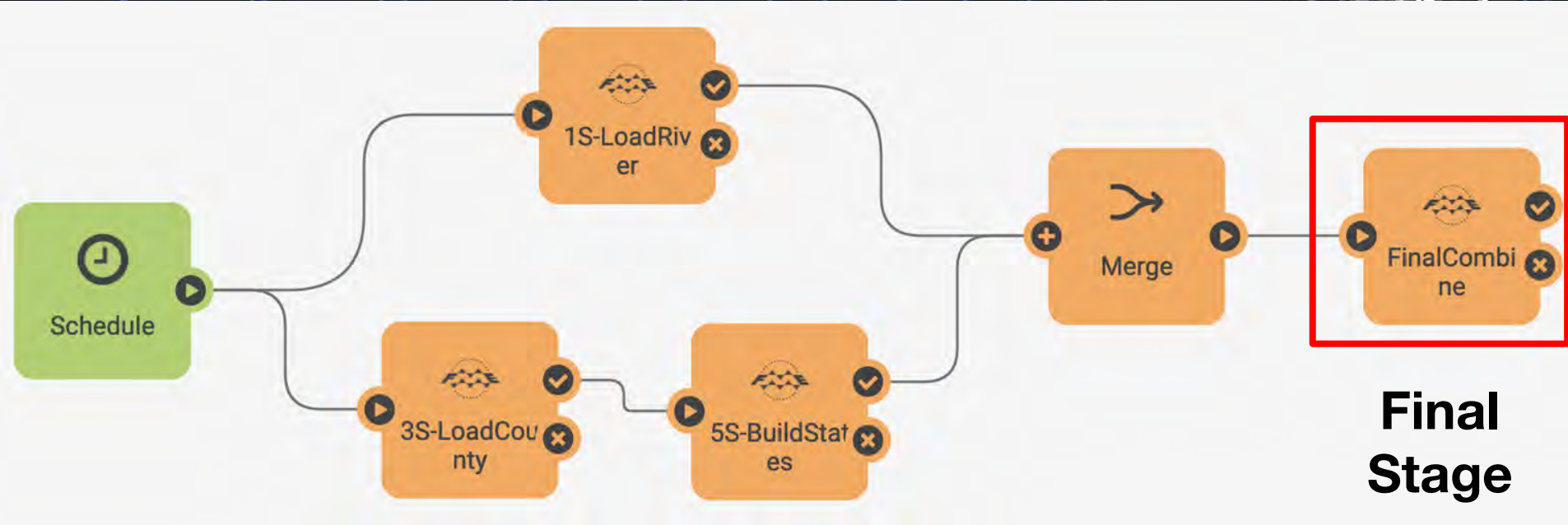
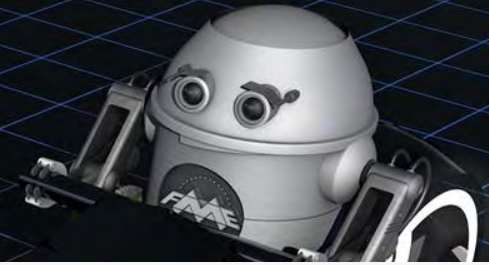
Sequential Execution



Automations: Workflow Orchestration



Automations: Workflow Orchestration





Demo: Orchestration

Challenge 5

*“As an Administrator, we want to know when a **new user** is created on our system.”*





NEW

System Events

Generated by FME Server activities

NEW

System Events

FME Server events made available.



System
Event



Security

*Account Activity:
User create, update, delete*



System
Event



System Info

*Warnings and errors
License expiry*



System
Event



Server Status

*Server startup
Backup, restore*



System
Event



Server Activity

*Repositories and Items:
Create, update, delete
Project export/import*

User Creation Notification

When

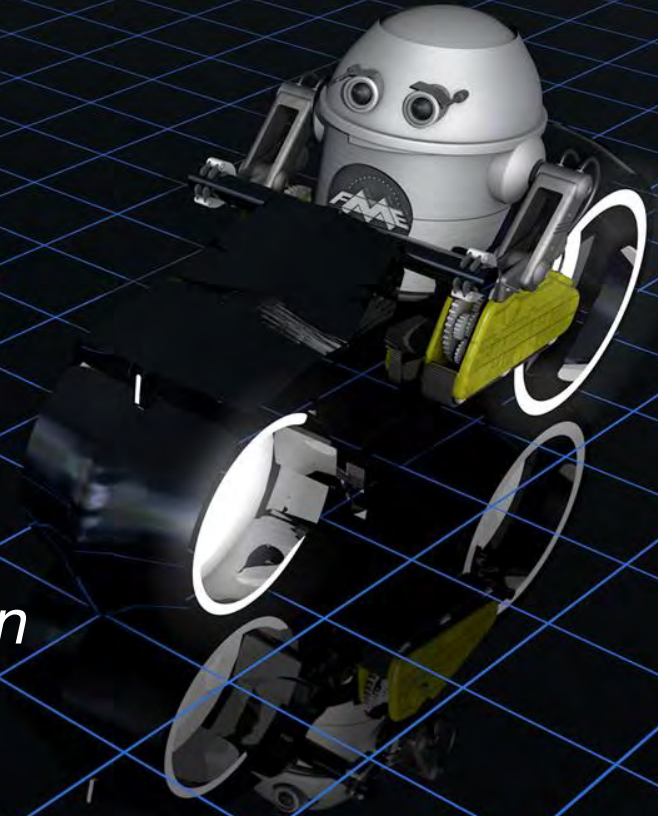
Trigger Occurs

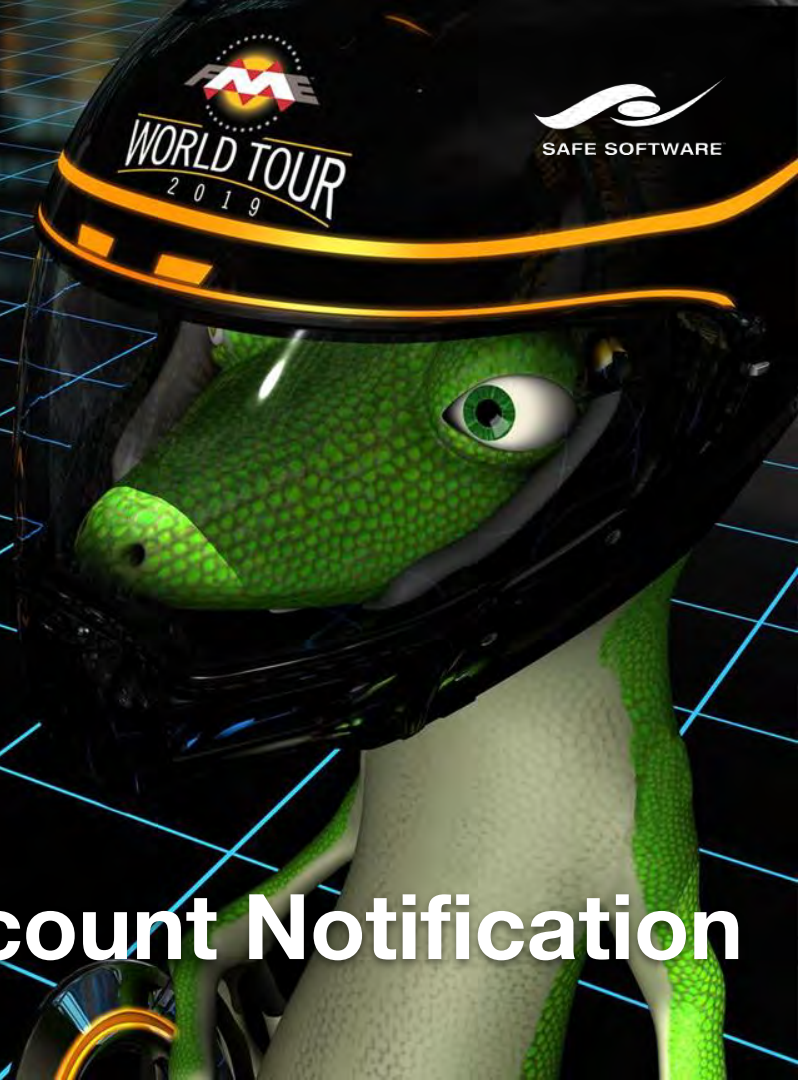
then

Perform Action

System Events & Automations

Bring power to System Administration





Demo: Administrator Account Notification

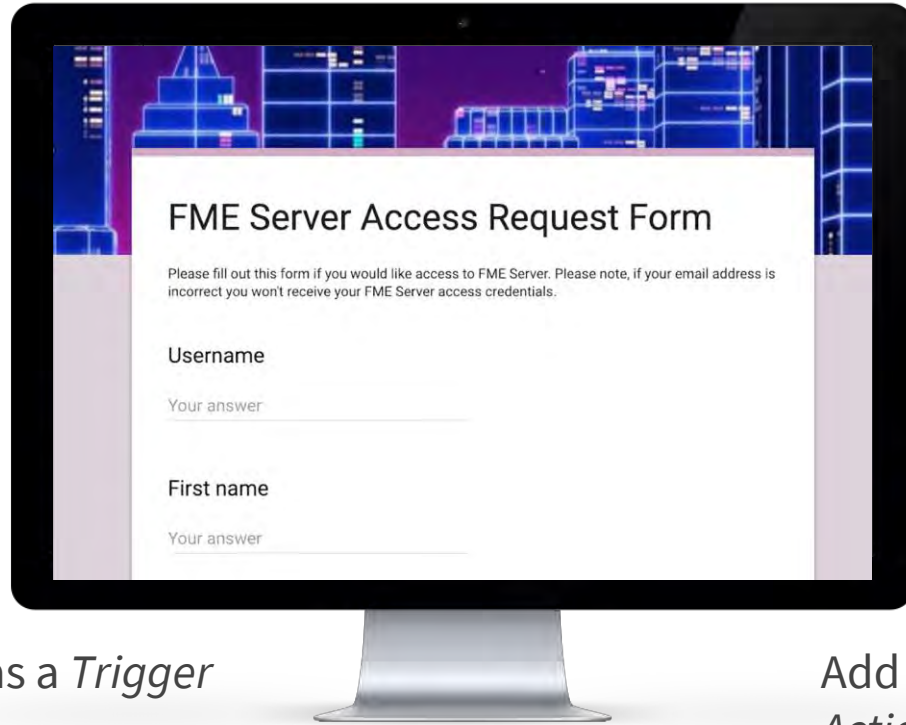
Bonus Challenge

“We want **anyone** to be able create an account on our FME Server so that:

1. They can use FME Server.
2. We see new accounts created.”



Run FME Server from other applications

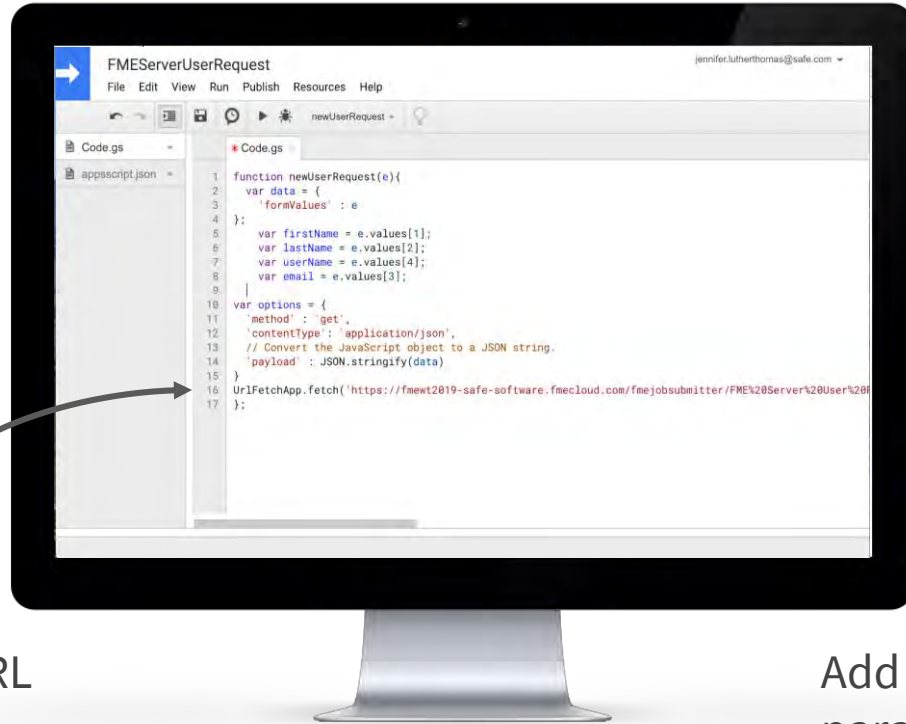


Add a Topic as a *Trigger*

Add a Workspace
Action

Save and enable your
Automation

Run FME Server from other applications



Use Direct URL

Add correct
parameter values

Application runs
workspace directly

FME Server 2019.0

New features we showed

FME Server Apps

NEW

Share FME workflows with anyone – no FME Server account required.

Automations

NEW

Build multi-step workflows to connect applications with triggers and actions.

System Events

NEW

Monitor FME Server events generated based on system activities.

FME Server 2019.0

More new and improved

Job Log Filtering

NEW

Filter out warnings, errors, and info.

Token Management

NEW

Share exactly what you want with support for multiple tokens.

FME Server Projects on FME Hub

NEW

Load and share projects on FME Hub.

Password Security Rules

NEW

Specify password complexity.

User Preferences

NEW

Experience the same user preferences from browser to browser.



Missions Complete

- 1 Challenge 1: FME Server Sharing
- 2 Challenge 2: Data Watching
- 3 Challenge 3: Nightly Updates
- 4 Challenge 4: New User Creation Notification
- 5 Challenge 5: Workspace Orchestration
- 6 Bonus Challenge: User Creation
- 7 FME Server 2019.0 New Features



Questions?