

# AIRMET/SIGMET

Fribourg, le 12 juin 2015  
Sauthier Eulalie, INSER SA



WORLD TOUR  
**2015**







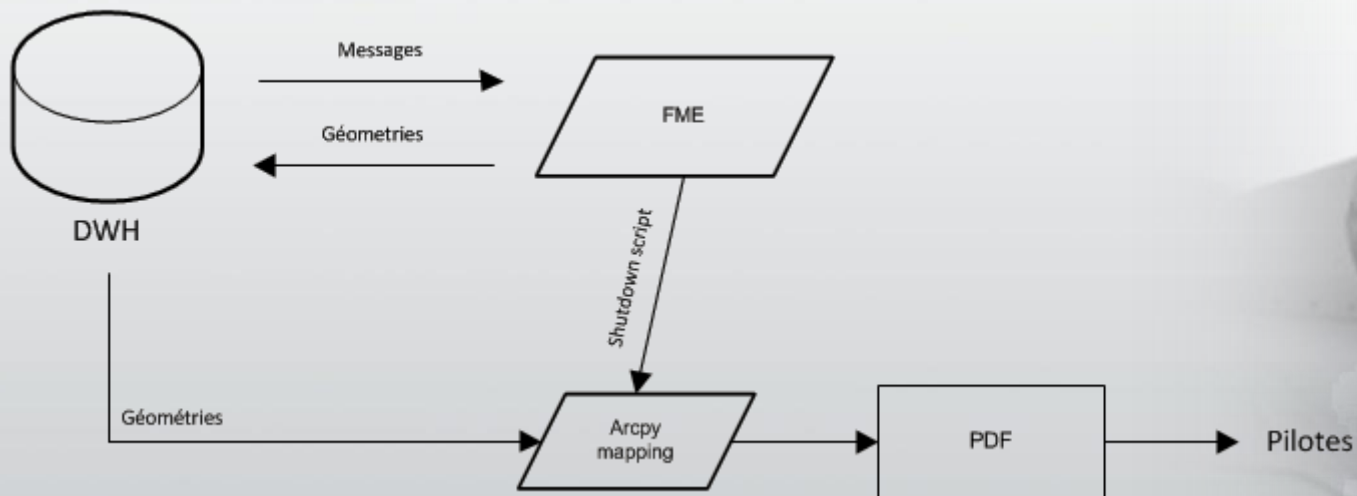
BOSR WS 050600 SIGMET ROMEO 2 VALID UNTIL  
051000 ME NH VT FROM MLT TO YSJ TO CON TO  
MPV TO MLT OCNL SEV TURB BLW 080 EXP DUE TO  
STG NWLY FLOW. CONDS CONTG BYD 1000Z.

**CONNECT. TRANSFORM. AUTOMATE.**



BOSR WS 050600 SIGMET ROMEO 2 VALID UNTIL  
051000 ME NH VT FROM MLT TO YSJ TO CON TO  
MPV TO MLT OCNL SEV TURB BLW 080 EXP DUE TO  
STG NWLY FLOW. CONDS CONTG BYD 1000Z.

CONNECT. TRANSFORM. AUTOMATE.



**CONNECT. TRANSFORM. AUTOMATE.**



# Interprétation des messages



Date d'émission du message et de validité du message

Type de phénomène: ICE, TURB, ..

Pays

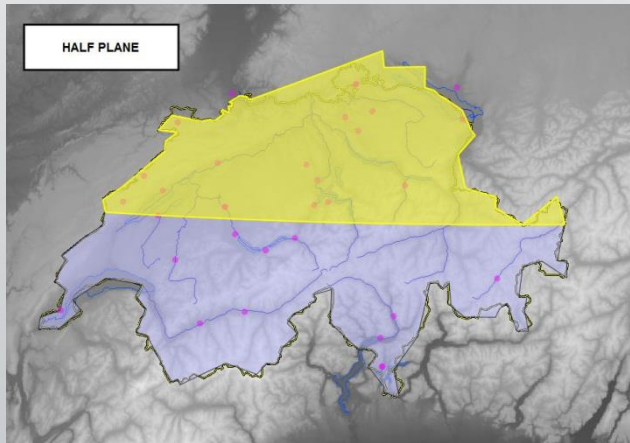
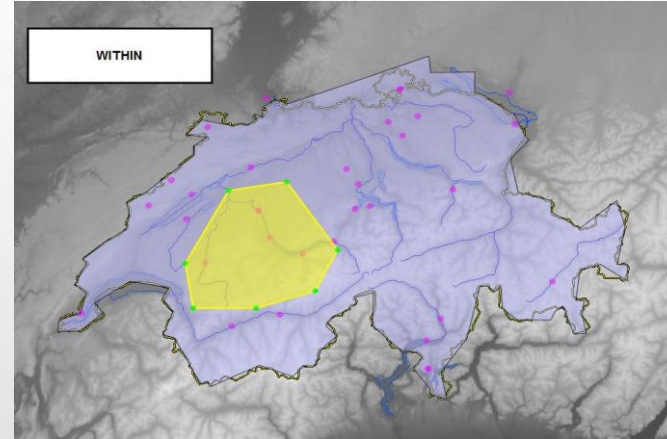
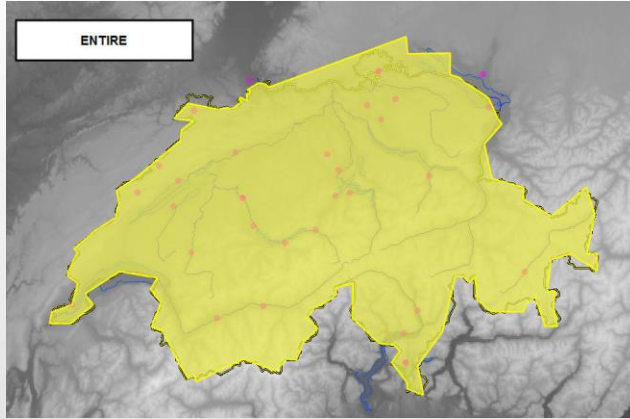
Déplacement

Localisation du phénomène

**CONNECT. TRANSFORM. AUTOMATE.**



# Création des géométries



- ENTIRE FIR (Flight Information Region)
- N OF N4651
- WI N4739 E00836 - N4736 E00853 -  
N4721 E00842 - N4734 E00805

**CONNECT. TRANSFORM. AUTOMATE.**

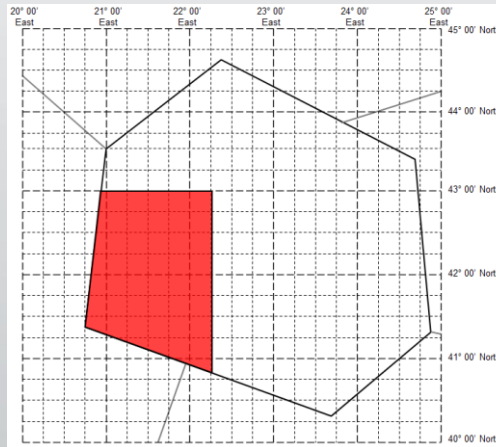




# Création des géométries



LSAS SIGMET 1 VALID 060930/061130 LSZH-  
LSAS SWITZERLAND UIR SEV ICE OBS **S OF N4300 AND W OF  
E02215** ABV FL200 MOV E INTSF=

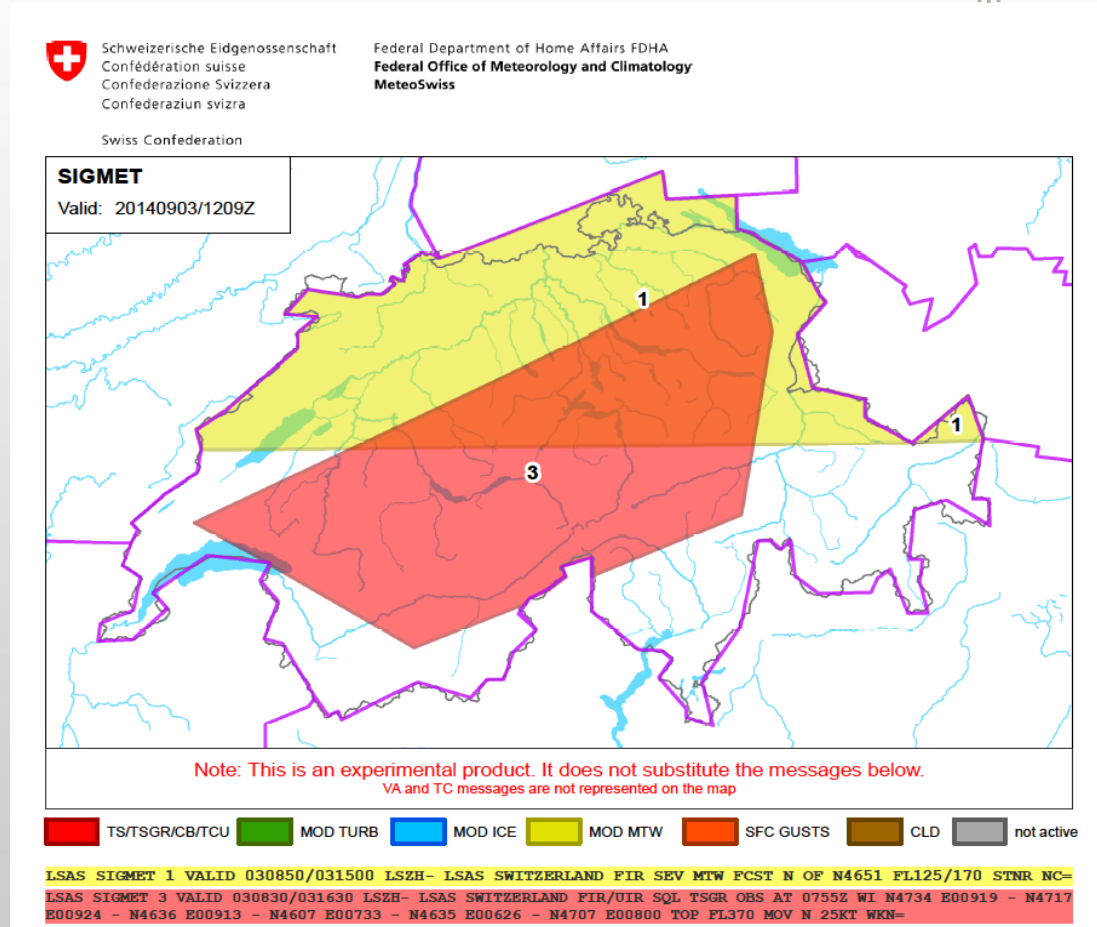


CONNECT. TRANSFORM. AUTOMATE.

# Création des PDF



Toutes les 5 minutes



CONNECT. TRANSFORM. AUTOMATE.

# Thank You!



- Questions?
- For more information:
  - [fme@inser.ch](mailto:fme@inser.ch)
  - INSER SA

CONNECT. TRANSFORM. AUTOMATE.

