

# 5 FME Transformers How they help achieve our Mission at MSF

**FME World Tour - Inser  
Bern 2022-05-17**

**Ken Bragg**

**GIS Centre Data Manager  
Médecins Sans Frontières**



# Médecins Sans Frontières Doctors without Borders Ärzte ohne Grenzen

Providing lifesaving medical humanitarian care,  
and speaking out about what we see.

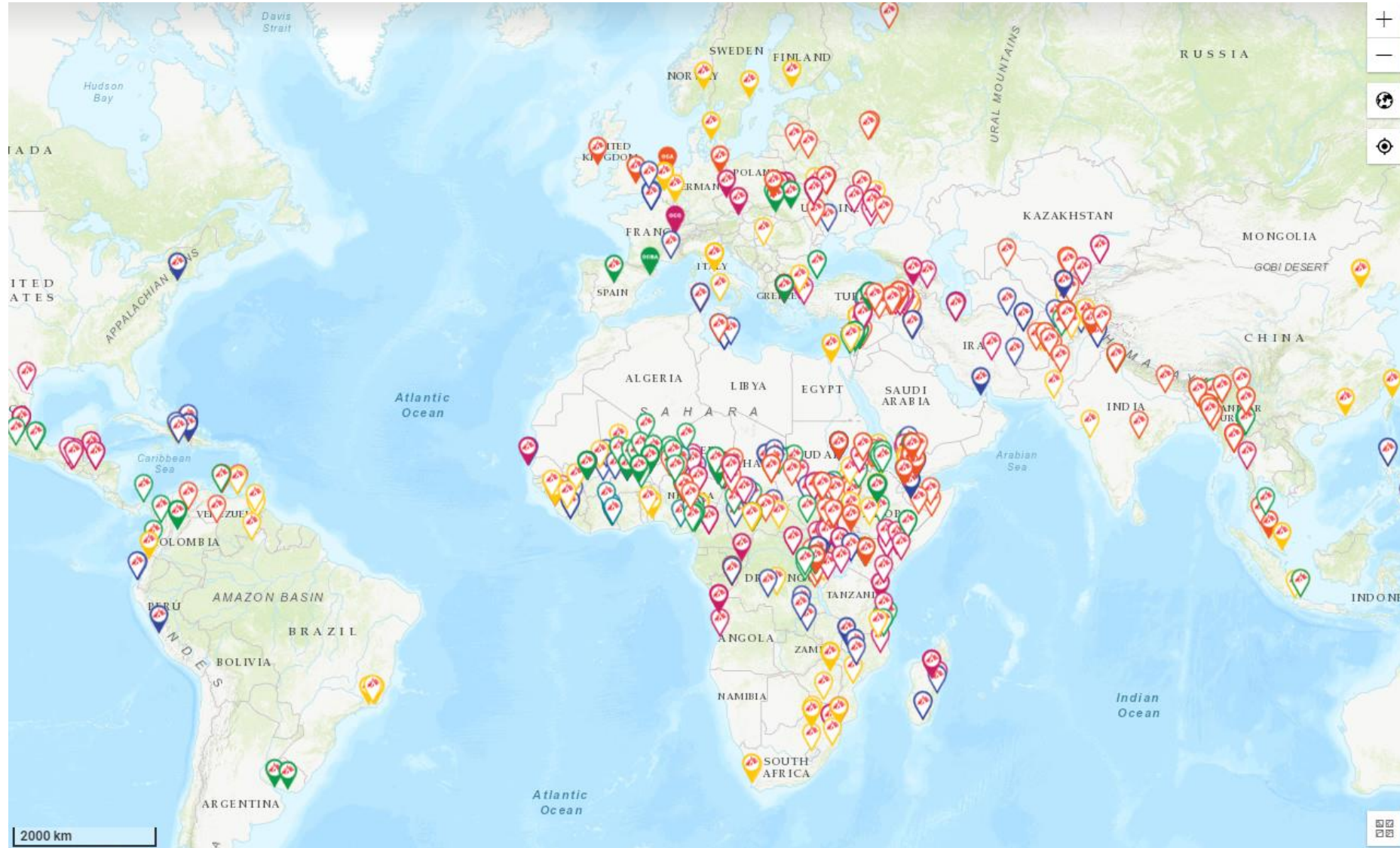


→ **Medical aid** as a priority



→ **Advocacy** as a necessary complement

# MSF Working in More than 70 Countries



# MSF GIS Centre



## MSF GIS Centre

We are collaboration of teams & partners working in many countries and serving the whole MSF Movement.

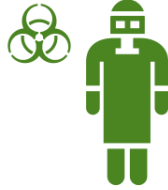
- MSF Operations Centres
- Regional Offices
- Field Projects

GIS Week Brussels 2019

# How does GIS Support MSF Operations?



Medical supplies  
+ logistics



Infectious diseases  
e.g., ebola



Vaccination  
campaigns



Waterborne diseases  
e.g. cholera



Nutrition



Technological and natural  
hazard/disaster

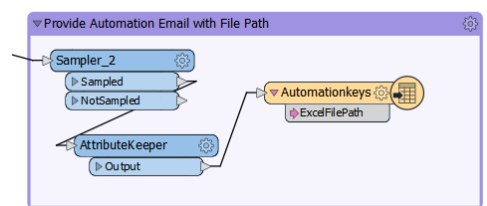
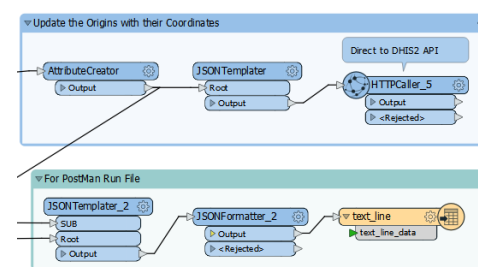
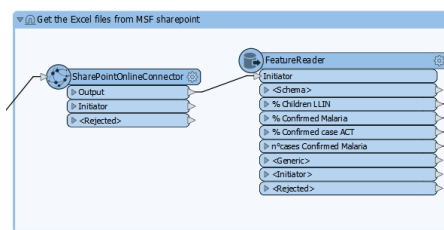
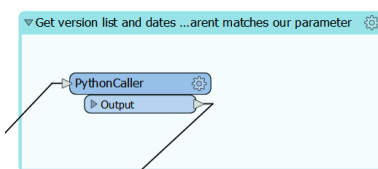
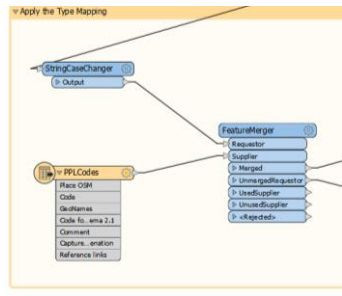


Security &  
Safety

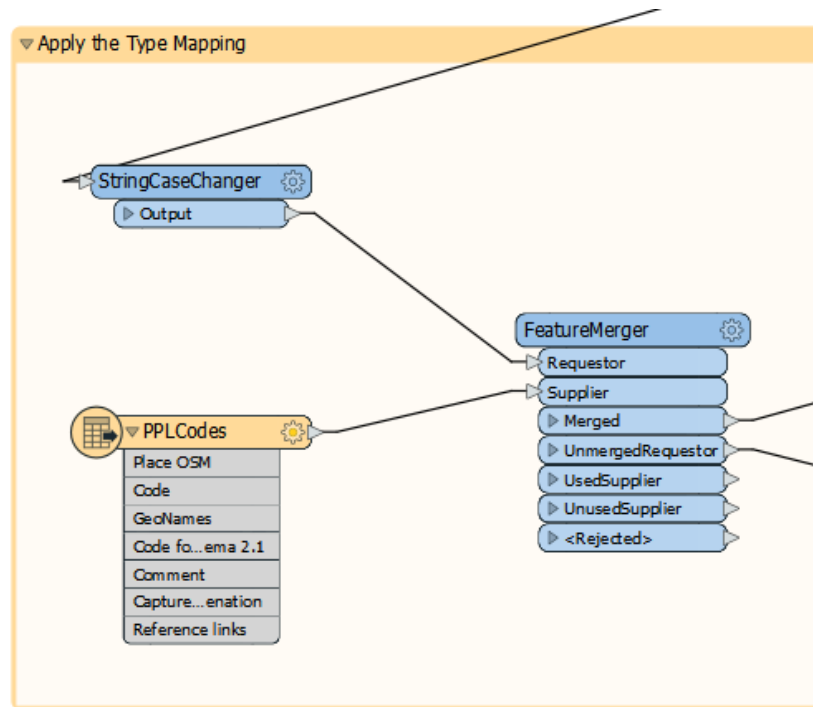
## How does FME Help....

# How does FME Help....

## A look at 5 Transformers and how they help us

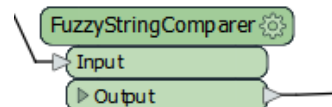


# FeatureMerger For Look-ups



A	B
Place OSM	Code
abandoned:isolated_dwelling	village_abandoned
abandoned:village	village_abandoned
dispersed_settlement	settlement
hamlet	settlement
city_block	neighborhood
suburb	neighborhood
quartier	neighborhood
quarter	neighborhood
neighbourhood	neighborhood
borough	neighborhood
block	neighborhood
locality	locality
single_dwelling	isolated_dwelling
farm	isolated_dwelling
refugee_camp	POI
refugee_settlement	POI
IDP Settlement	POI
IDP_camp	POI
IDP_settlement	POI

## Bonus

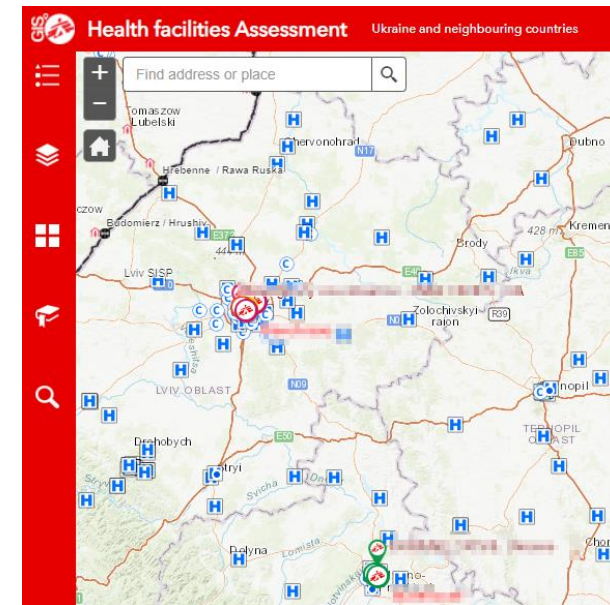


# How Does this help us?

Integration!

- Field data integration
- OSM and other external data integration

## Example Health Facilities Assessment Ukraine



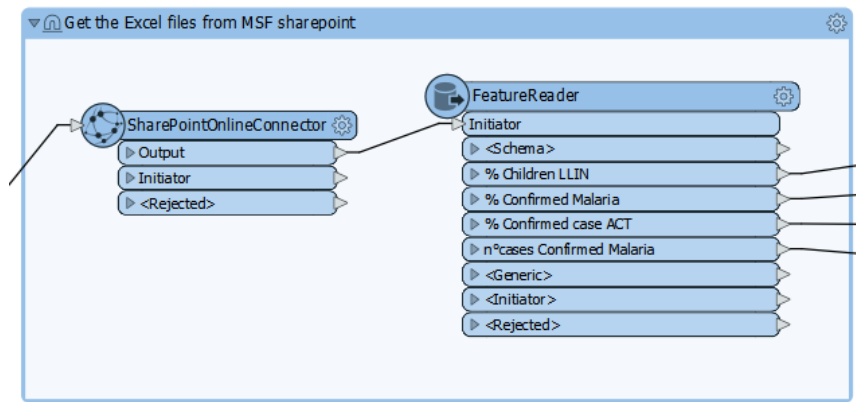
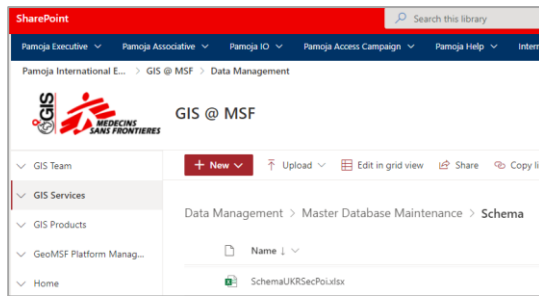




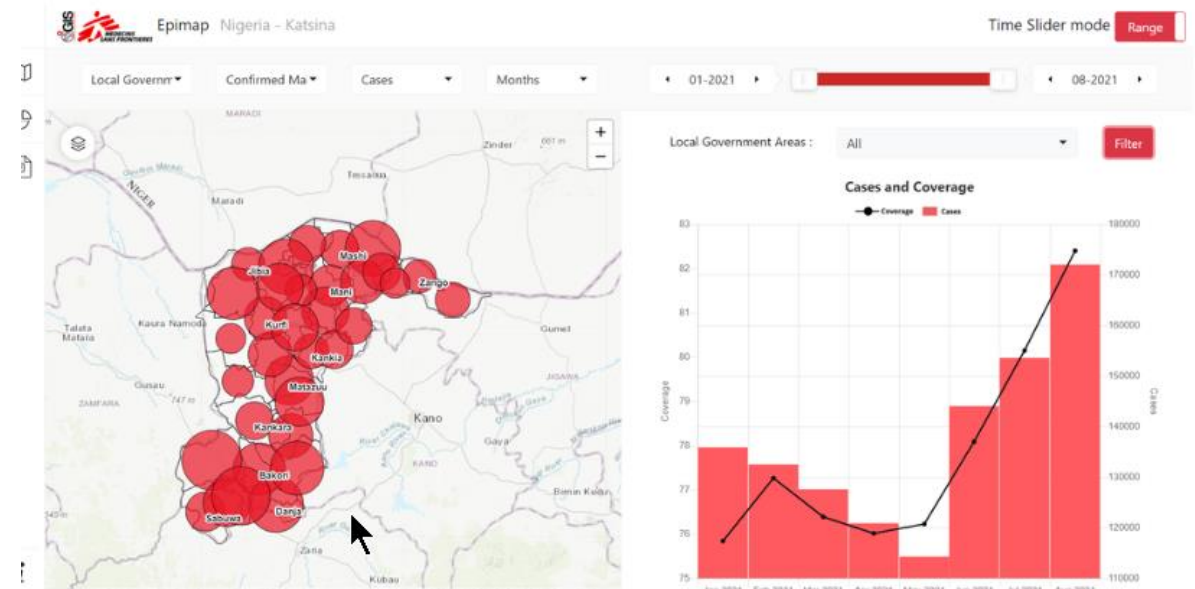
# SharePointOnlineConnector

## How Does this help us?

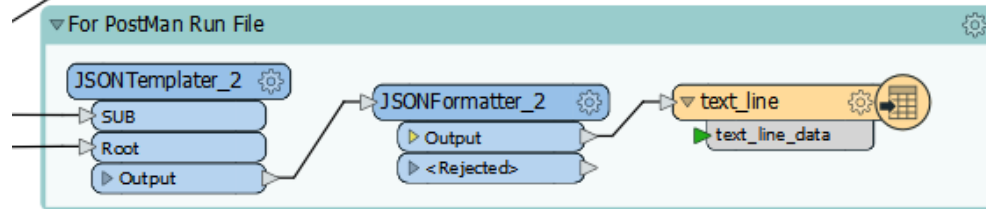
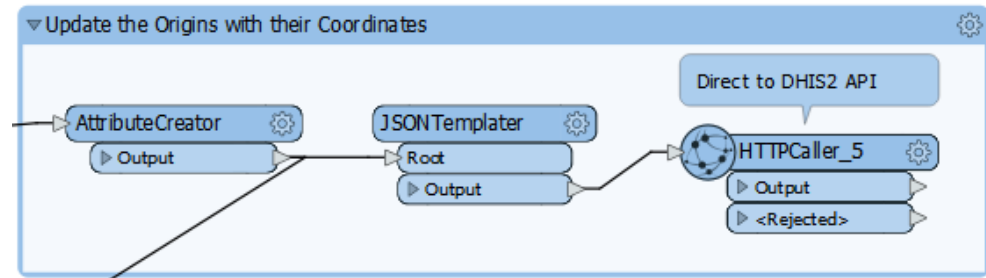
- ➔ Get Data *from* our Teams
- ➔ Share Data *to* our Teams



## Example: EpiMap Nigeria



# JSONTemplater



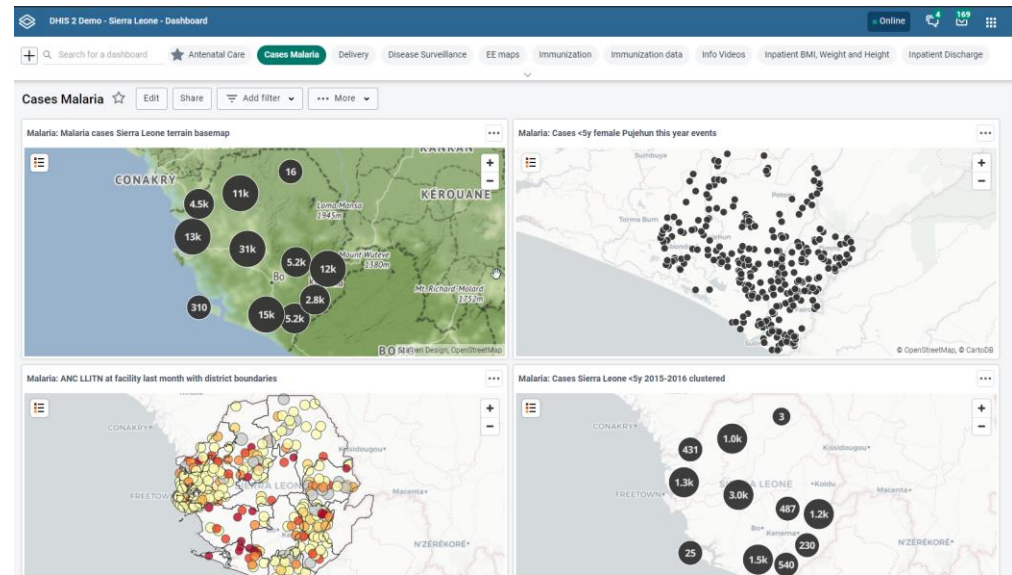
ROOT Template Expression

```
1 {
2   "geometry": {
3     "type": "Point",
4     "coordinates": [
5       fme:get-attribute("longitude"),
6       fme:get-attribute("latitude")
7     ]
8   }
9 }
```

## How Does this help us?

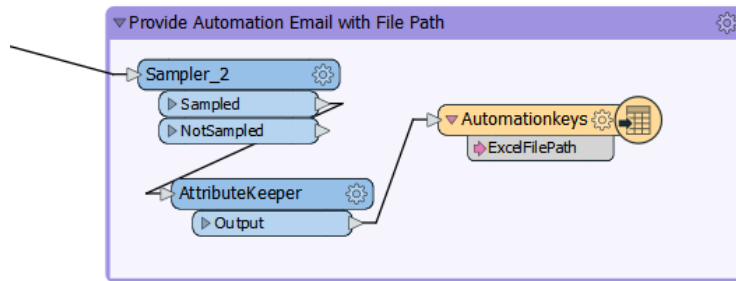
- ➔ Update data via an API
- ➔ Modify Big JSON automatically file for vector tiles

**Example:** District Health Information Systems (DHIS2), update patient origins



Screen shot shows sample data from DHIS2 playground *not* from MSF

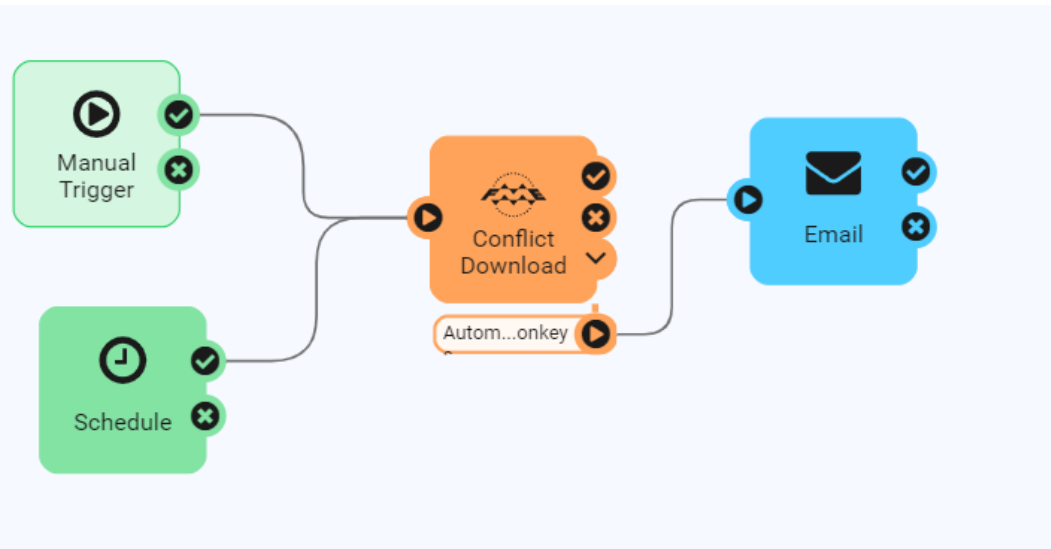
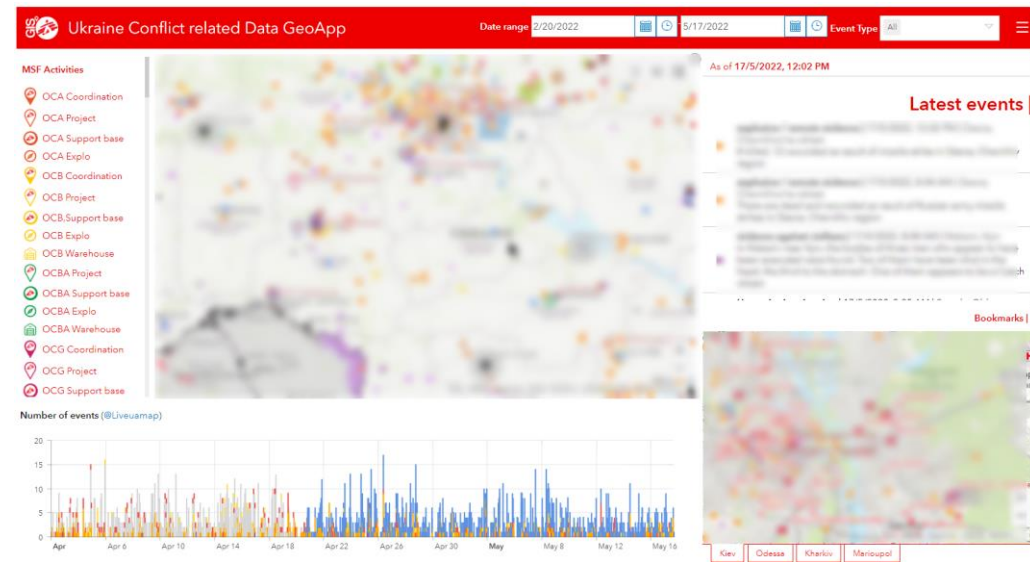
## FME Server Automations Writer



## How Does this help us?

- ➔ Sending notifications with Email
- ➔ Less pain and suffering with file paths on Server

**Example:** Sending security update emails to field teams with Conflict Data



# What's Next for Us and For you?

- Focus on Self-Serve work-flows
- Vector Tile Generation, can FME help us here?
- What are you doing next with FME?



Thanks very much to  
Inser, to Éloïse Neff for seeing potential of FME and you for coming!

Ken BRAGG, GIS Centre Data Manager, Médecins Sans Frontières